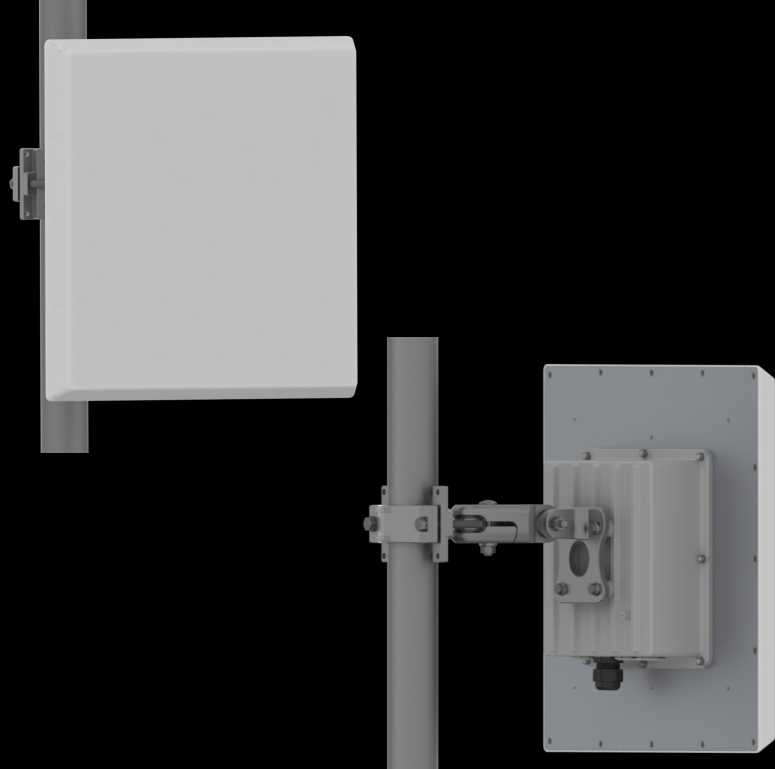


# ARC-IA2419B02

ARC IES™ Panel Antenna  
2.3-2.5 GHz 19dBi



- Fits ARC IES™ Enclosure Solutions - Sold Separately
- High gain, low cost circuit design
- US Engineered
- Manufactured under strict US quality control procedures
- Low profile and rugged design for outdoor use
- Custom Enclosures available

## Electrical Specifications

|   |  |
|---|--|
| <b>Frequency Range</b>                        | 2.3-2.5 GHz                            |
| <b>Gain (Typ)</b>                             | 19dBi                                  |
| <b>Polarization</b>                           | Single Linear – Vertical or Horizontal |
| <b>3dB Beamwidth<br/>Vertical/ Horizontal</b> | 18 degrees/ 18 degrees                 |
| <b>VSWR</b>                                   | ≤1.5:1 typ, ≤1.7:1 max                 |

|                             |              |
|-----------------------------|--------------|
| <b>Front-to-Back Ratio</b>  | >30 dBi      |
| <b>Cross Polarization</b>   | >30 dBi      |
| <b>Power Rating</b>         | 30 watts     |
| <b>Impedance</b>            | 50 ohms      |
| <b>Lightning Protection</b> | DC Ground    |
| <b>Connector Type</b>       | R/A SMA Jack |

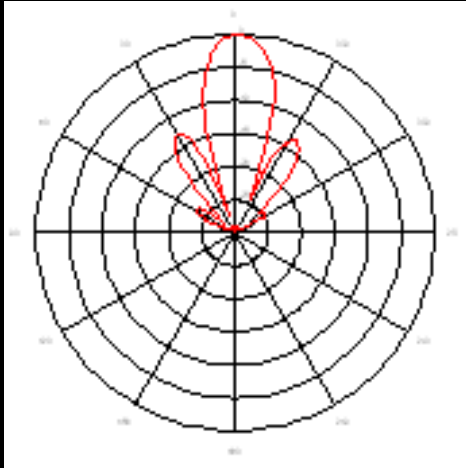
## Physical/Environmental Specifications

|                               |   |
|-------------------------------|---|
| <b>Length x Width x Depth</b> | 15.4 x 15.4 x 1.7.in<br>(39.1 x 39.1 x 4.3cm) |
| <b>Weight</b>                 | 2.8 lbs (1.3kg)                               |
| <b>Backplane</b>              | Aluminum                                      |
| <b>Enclosure</b>              | Powder-coated die-cast aluminum,<br>gray      |
| <b>Radome</b>                 | UV stabilized ABS plastic, gray               |

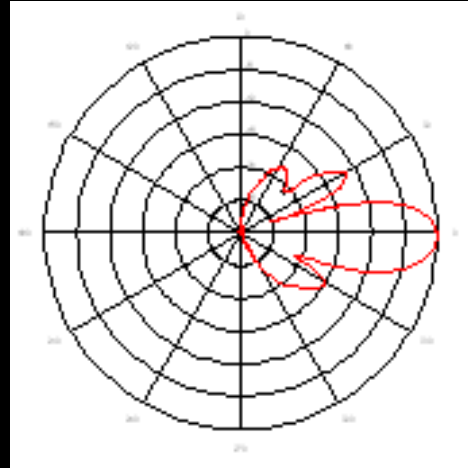
|                                      |   |
|--------------------------------------|---|
| <b>Wind Survivability</b>            | 125mph (201kph)                           |
| <b>Wind Load</b>                     | 1.65ft <sup>2</sup> (0.15m <sup>2</sup> ) |
| <b>Operating Temperature</b>         | -49°F to 149°F (-45°C to 65°C)            |
| <b>Pole Mount Diameter<br/>Range</b> | 0.75in to 3.0in (1.9cm to 7.6cm)          |

### Antenna Patterns

RF Patterns  
Vertical Cut, Typ.



RF Patterns  
Horizontal Cut, Typ.



### Shipping Information

|                    |  |
|--------------------|--|
| <b>Size</b>        | 19 x 16 x 16in (48.3 x 40.6 x 40.6cm)              |
| <b>Weight</b>      | 31 lbs (14.1kg)                                    |
| <b>Description</b> | Packaging includes 10 antennas in an over pack box |

\*These reflect standard box sizes for palletized shipments. Over pack boxes will be required for air and ground shipments.

### Ordering Information

|                    |   |
|--------------------|---|
| <b>Part Number</b> | ARC-IA2419B02   |
| <b>Description</b> | Panel, 2.3-2.5 GHz, 19dBi, Single Pol, R/A SMA Jack, ARC IES™ Enclosure Mount |