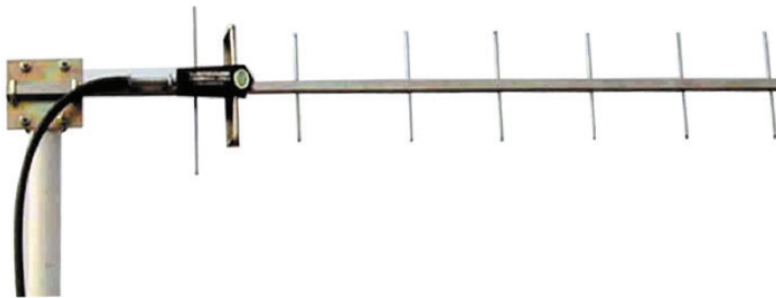


# Yagi Antenna

ANT-148 Technical Sheet



## Applications

- 800MHz/900MHz band
- GSM900/IS95 mobile communications system
- Point to Multipoint system
- RFID
- Repeater receiving antenna
- Long-distance terminal antenna

## Features

- Broad band, High gain, Low VSWR
- High quality stainless steel construction
- Simple structure
- Strong adaptability of environment
- The connector with a pigtail
- Vertical or horizontal polarisation

## Specifications

Model	ANT-148
Elements	8
Frequency Range (MHz)	860 to 960MHz
Bandwidth (MHz)	70
Gain (dBi)	11.2
VSWR	≤1.5
Vertical Beamwidth °	40
Horizontal Beamwidth °	48
F/B Ratio (dB)	≥16
Impedance Ω	50
Polarisation	Vertical or Horizontal
Maximum Power (watts)	100
Connector	N-Type Female or customised
Length (cm)	94
Weight (kg)	0.9
Mast Diameter (mm)	40 to 50

