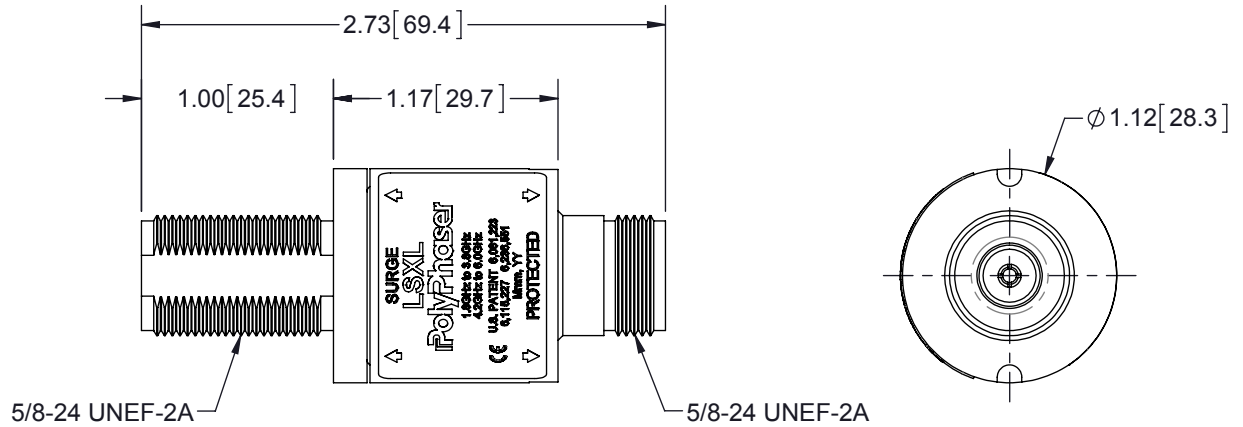
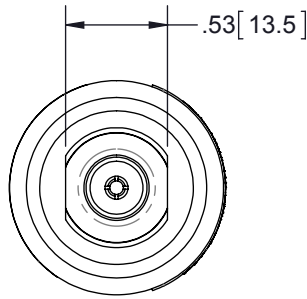


REVISIONS				
REV.	DESCRIPTION	ECN	DATE	APPROVED
E	REFER TO ECN	11951	8/20/13	JLJ



MAXIMUM CHARACTERISTICS

APPLICATION:

- DC BLOCK/RF ONLY
- BULKHEAD MOUNT
- WEATHERPROOF WHEN INSTALLED

SURGE:

18kA IEC 61000-4-5 8/20µs WAVEFORM

FREQUENCY RANGE:

- 1.8GHz TO 3.8GHz
- 4.2GHz TO 6.0GHz

VSWR:

- ≤1.2:1 TYPICAL
- ≤1.3:1 MAX

INSERTION LOSS:

≤0.2dB

CONTINUOUS POWER:

10W

LET THROUGH VOLTAGE:

<±3 VOLTS FOR 3kA @ 8/20µs WAVEFORM

THROUGHPUT ENERGY:

≤0.5µJ FOR 3kA @8/20µs WAVEFORM

TEMPERATURE:

-40°C TO +85°C STORAGE/OPERATING

VIBRATION:

1G AT 5Hz TO 100Hz

ENVIRONMENTAL:

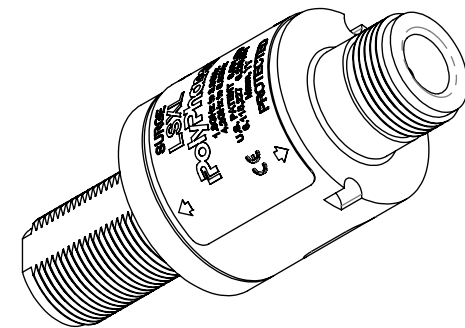
- MEETS IEC 60529 IP65.
- MEETS BELLCORE #TA-NWT-000487
- PROCEDURE 4.11, WIND DRIVEN (120MPH)
- RAIN INTRUSION TEST.

CE COMPLIANT

RoHS COMPLIANT

HARDWARE KIT INCLUDES:

QTY	DESCRIPTION
1	NUT 5/8-24 303 HEX SS
1	WASHER 5/8 410 SS
1	SILICONE O-RING 019



CUSTOMER APPROVAL: _____ DATE: _____

ALL DIMENSIONS SHOWN ARE FOR REFERENCE ONLY.

<small>UNLESS OTHERWISE SPECIFIED LEADING DIMENSIONS ARE INCHES DIMENSIONS IN [] ARE MILLIMETERS</small> <small>TOLERANCES: FRACTIONS=± 1/32 .XX=± .03 ANGLES=± 1° .XXX=± .010</small> <small>NOTICE: THE INFORMATION AND DESIGN IN THIS DOCUMENT IS THE PROPERTY OF POLYPHASER CORPORATION. ALL RIGHTS RESERVED.</small>	<small>DRAWN</small> RCD 6/26/03		<small>SHEET</small> 1 <small>OF</small> 1
	<small>ENG APPD</small> JLJ 7/24/03		<small>SCALE</small> 1:1
	<small>PRODUCT MGR</small> JLJ 7/24/03		<small>TITLE</small> 1.8-3.8GHz & 4.2-6.0GHz MICROWAVE FILTER
	<small>MARKETING APPD</small> PH 8/11/03		<small>CUSTOMER SPECIFICATION</small>
<small>THIRD-ANGLE PROJECTION</small> 	<small>PROJECT NO.</small> 	<small>SIZE</small> LSXL-C <small>CAGE</small> A <small>PROD CAT</small> RFP <small>PART NUMBER</small> 61114	<small>REV</small> E

THESE COMMODITIES, TECHNOLOGY OR SOFTWARE WERE EXPORTED FROM THE UNITED STATES IN ACCORDANCE WITH THE EXPORT ADMINISTRATION REGULATIONS. DIVERSION CONTRARY TO U.S. LAW PROHIBITED.