

Mounting instructions - Elevation Adjustable Mount MNT-60A

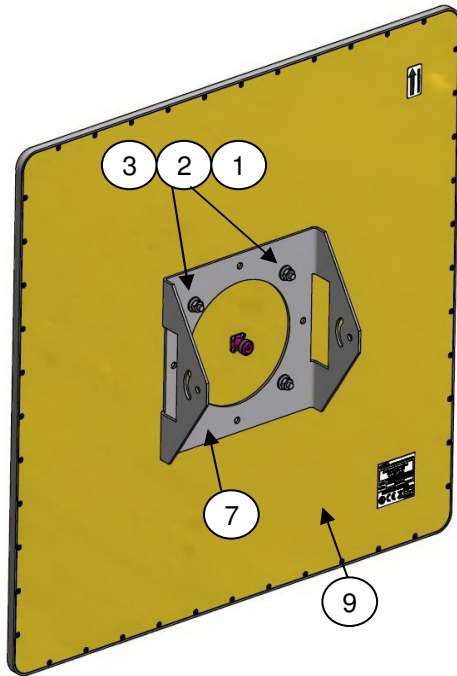


Fig. 1

Step 1

1.1 Align holes of Plate item 7 with studs of Antenna item 9. Put Plate onto Antenna (**Fig. 1**)

1.2 Put on each of the 4 Antenna's studs Plain Washer item 3, Spring Washer item 2 and screw them with Nut item 1. Tighten the 4 Nuts at a torque of 50 lb*in.

Step 2

2.1 Place 2 Clamps item 6 & Base item 8 touch to the Pole (**Fig. 2**).

2.2 Insert 4 Screws item 4 into the slots of Base item 8 and through the slots of Clamps item 6. Put on each Screw's end protruding from Clamps Plain Washer item 3, Spring Washer item 2 & screw them with Nut item 1. Tighten tentatively 4 Nuts item 1.

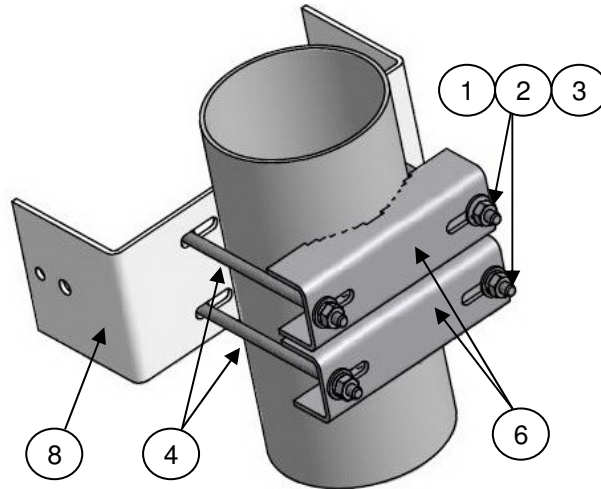


Fig. 2

| ITEM | DESCRIPTION | QTY |
|------|---------------------------------|-----|
| 1 | NUT NC 1/4-20 | 10 |
| 2 | Helical Spring Lock Washer #1/4 | 12 |
| 3 | Plain Washer #1/4 | 14 |
| 4 | Hex Cap Screw NC 1/4-20 x 110 | 4 |
| 5 | Hex Cap Screw NC 1/4-20 x 3/4 | 4 |
| 6 | CLAMP | 2 |
| 7 | PLATE | 1 |
| 8 | BASE | 1 |
| 9 | Antenna | 1 |

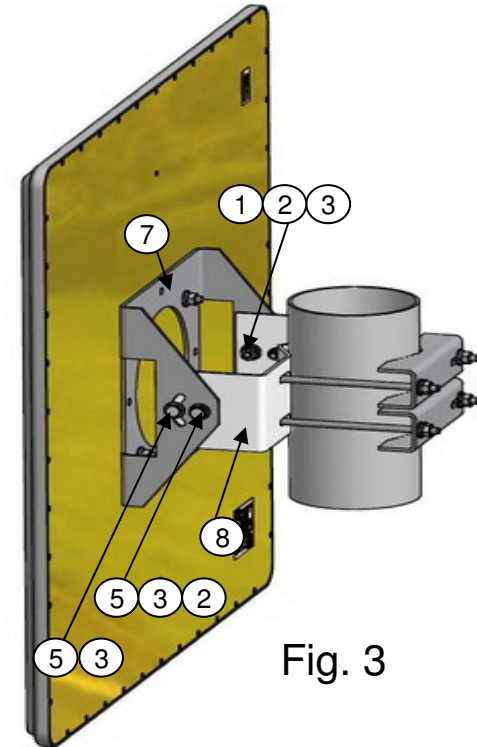


Fig. 3

Step 3

3.1 Adjust 2 slots & 2 holes of Plate item 7 to the 4 holes of Base item 8 (**Fig. 3**).

3.2 Insert Screw item 5 with Plain Washer item 3 & Spring Washer item 2 into each hole at the arms' end of Plate item 7 and through Base item 8. Screw until contact.

3.3 Insert Screw item 5 with Plain Washer item 3 into the arc slot of Plate item 7 and through Base item 8. Put on Screw's end protruding from Base's arm Plain Washer item 3, Spring Washer item 2 & screw them with Nut item 1. Make the same for the second arc slot. Tighten the 2 Nuts item 1 until contact.

3.4 Adjust antenna tilt at an angle you need using 4 Screws item 5 and tighten it at a torque of 266 lb*in.

3.5 Adjust antenna azimuth using 4 Nuts item 1 and tighten it at a torque of 266 lb*in.